

Third Circular

The 15th Korea-China-Japan Joint Conference on Geography

Livable Cities, Resilient Future

October 20-23, 2023

21st Century Building, The University of Seoul



Invitation

Welcome to the 15th Korea, China, Japan Joint Conference on Geography!

On behalf of the Korean Geographical Society, we would like to express appreciation to you for your interest in this year's conference, and we look forward to your participation this year.

We are glad that this year's conference will finally be held in Korea.

Considering the pandemic that we have experienced, we believe that this year's conference will provide the participants with the venue for the discussions regarding recent geographical phenomena and their implications.

The key theme of this conference is “**Livable Cities, Resilient Future.**” There will be at least eight special sessions and topics that span from COVID-19, resilience, GIS, and recent issues and topics in human geography and physical geography, focusing on marginalized groups and climate change, among others. On the last day of the conference, a field trip that highlights DMZ and a mixture of modern and traditional places as well as the ecological history of Seoul will be offered.

We hope that everybody who joins the conference enjoys fruitful academic conversations and networking opportunities.

Sincerely,

Organizing Committee of the 15th Korea, China, Japan Joint Conference on Geography

Venue

The University of Seoul

Website: <https://www.uos.ac.kr/en/main.do>

Address: 163 Seoulsiripdae-ro, Dongdaemun-gu, Seoul 02504, Korea



Location of the University of Seoul on Google Maps:

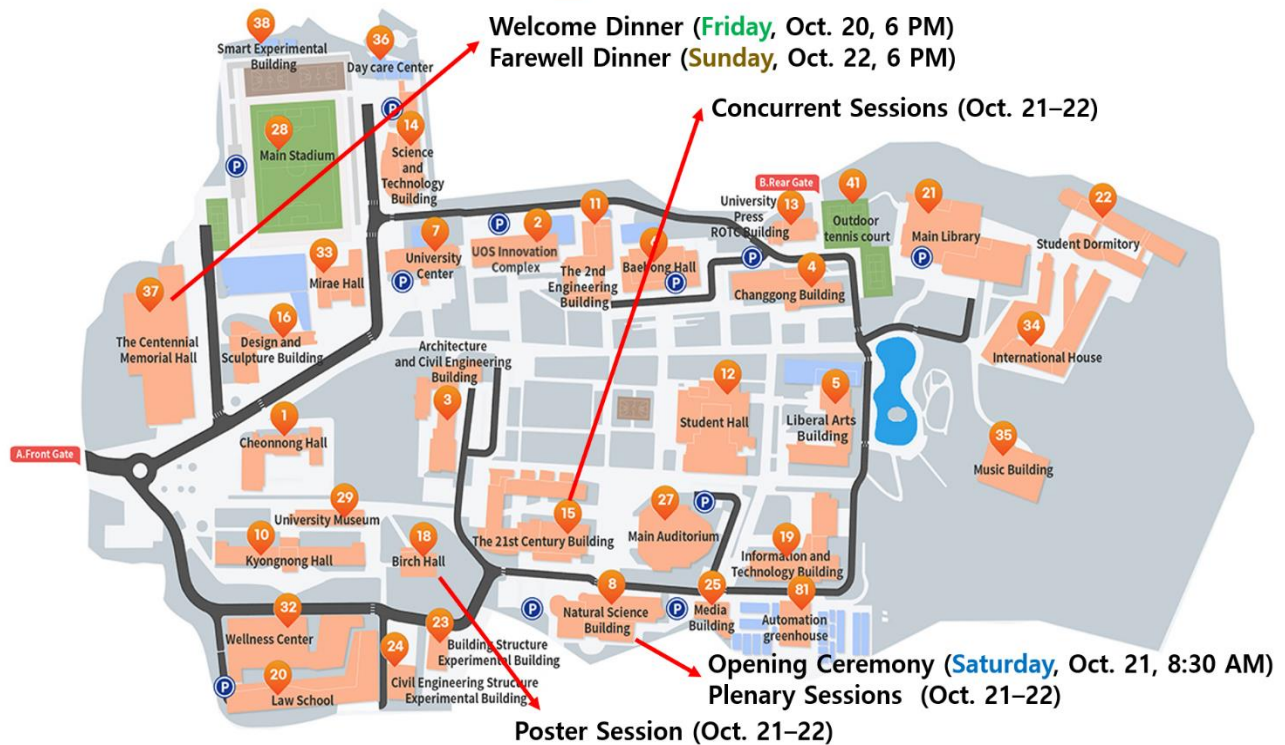
<https://goo.gl/maps/XmM4wsVXFsmcPvvq8?coh=178572&entry=tt>

Location of the University of Seoul on Baidu Maps:

<https://j.map.baidu.com/41/4vGg>

For the University of Seoul campus map, please refer to

<https://www.uos.ac.kr/en/about/aboutLoca.do>



- **Welcome Dinner [Friday 6 PM, October 20]:** International Conference Hall, The Centennial Memorial Hall, The University of Seoul [#37]
- **Opening Ceremony [Saturday 8:30 AM, October 21]:** Conference Hall (ground fl), Natural Science Building, The University of Seoul [#8]
- **Plenary Sessions [October 21–22]:** Conference Hall(ground fl), Natural Science Building, The University of Seoul [#8]
- **Concurrent Sessions [October 21–22]:** Classrooms in the 21st Century Building, The University of Seoul [#15]
- **Poster Session [October 21–22]:** Birch Hall, The University of Seoul [#18]
- **Farewell Dinner [Sunday 6 PM, October 22]:** International Conference Hall, The Centennial Memorial Hall, The University of Seoul [#37]
- **Executive Committee Meeting [Friday 8 PM, October 20]:** Assembly room (#201) in the 21st Century Building, The University of Seoul [#15, campus map]

PUBLIC TRANSPORTATION

Incheon Int'l Airport → Cheongnyangni (清凉里, 청량리) Station

■ By Airport Bus

Take Bus nos. **6002 (Airport Limousine Bus)** at **Incheon Int'l Airport** →

Get off at “**Cheongnyangni Station**” **bus stop** (The last stop).

■ By Airport Railroad

Take **Airport Railroad Express (AREX)** at **Incheon Int'l Airport** →

Transfer to **Subway Line 1** at **Seoul Station** (The last station) →

Take the subway bound for City Hall →

Get off at **Cheongnyangni Station**.

Gimpo Int'l Airport → Cheongnyangni Station

■ By Airport Railroad

Take **Airport Railroad (AREX, 공항철도)** at **Gimpo Int'l Airport** →

Transfer to **Subway Line 1** at **Seoul Station** (i.e., the last station of Airport Railroad) →

Take the subway bound for City Hall →

Get off at **Cheongnyangni Station**.

Cheongnyangni Station → The University of Seoul (서울시립대)

■ By Bus

Please find Cheongnyangni Station from this angle (Fig. 1). On your right, you will be able to find **EXIT 4** of the Cheongnyangni Subway Station like Fig. 2.



Fig. 1

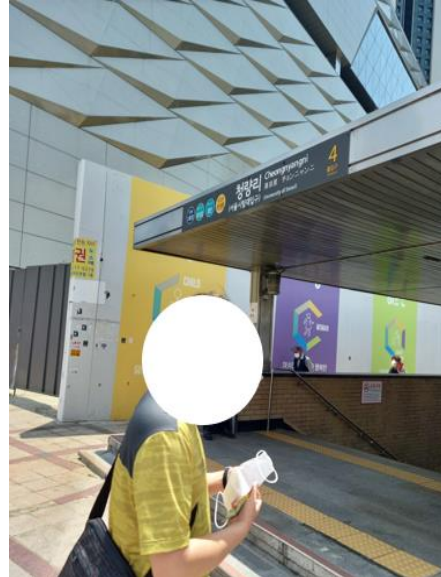


Fig. 2

Just next to **EXIT 4** of the Cheongnyangni Subway Station (Fig. 3), you can see many buses approaching many platforms of this bus stop (Cheongnyangni Station Transfer Center, 청량리역 환승센터, <https://j.map.baidu.com/2b/FoSh>). Platform numbers are indicated like Fig. 4.

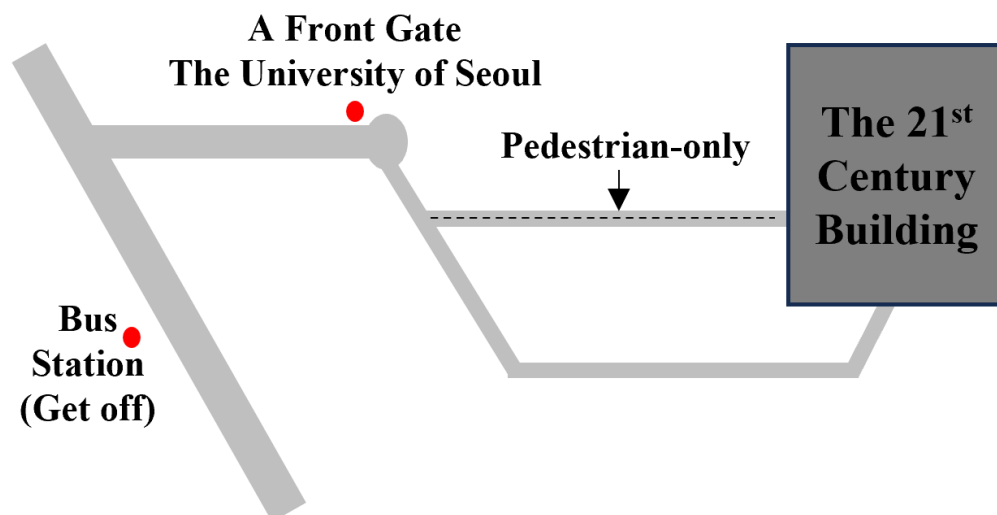
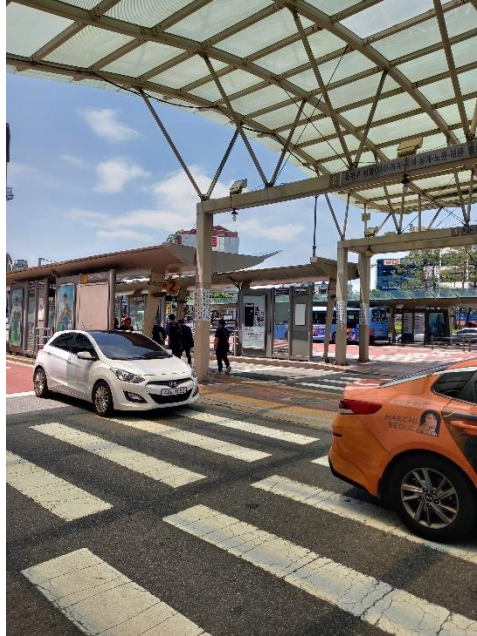


Fig. 3



Fig. 4

Please cross the zebra crossing and find Platform 3. Take Bus nos. **2230, 3216, 121, 420, 3220, 720** at this Bus Station (**The 3rd Platform**) → Get off at **The University of Seoul (The 3rd~4th bus stop)**.



TAXI CARD

이 손님을 서울시립대 21세기관으로 모셔다 주십시오.

Please show this card to the taxi driver.

このカードをタクシーの運転手さんに見せてください。

请把这张图给出租车司机看一下。



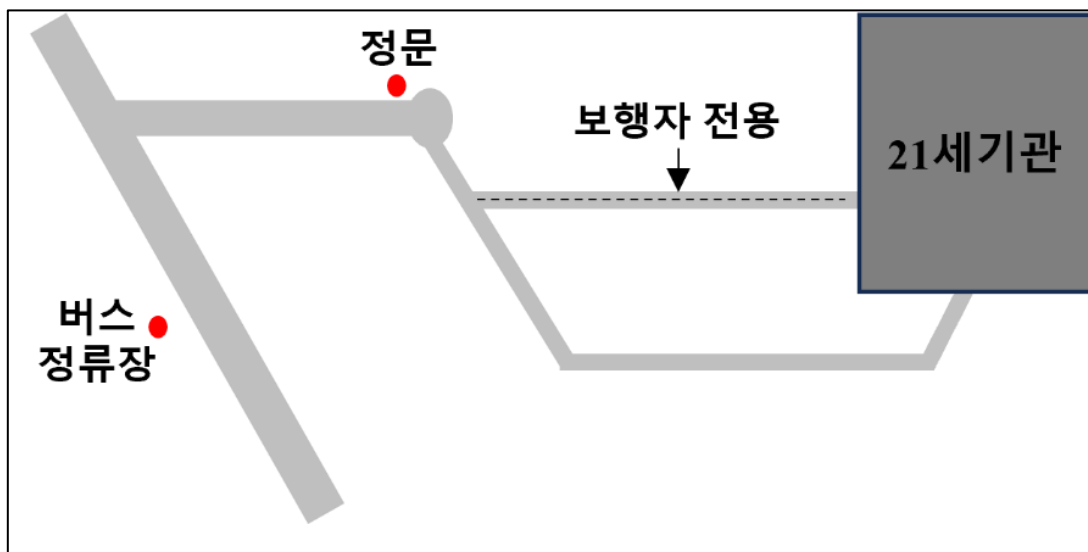
서울시립대학교
UNIVERSITY OF SEOUL

주소: 서울특별시 동대문구 서울시립대로 163

Address: University of Seoul 163 Seoulsiripdaero, Dongdaemun-gu, Seoul

정문 진입 후,

회전교차로에서 오른쪽 첫번째 출구 일방통행 길로 직진



Call for Papers

The organizing committee has prepared for sessions that can facilitate discussions regarding emerging geographical issues that fit with the conference theme, **“Livable Cities, Resilient Future.”**

The sessions proposed by the organizing committee focus on major issues that incorporate comprehensive sub-fields in geography. The topics include the geography of COVID-19, which has affected human life and mobilities worldwide. The topics for the sessions also cover urban planning approaches to cope with the future of cities where increasingly diverse groups of people will coexist. Sessions in GIS and RS consider the development of big data and machine learning research in spatiotemporal analysis. We will also discuss examples of international academic exchanges to facilitate further international collaboration. Main problems in East Asian cities and regions will be discussed including urbanization and regional inequality as well as conflicts among different groups. The sessions will also provide opportunities to discuss global issues during the Anthropocene and global risks that humanity faces. We believe that the sessions will be able to enhance opportunities for geographers to contribute to solving issues and advancing theories on these topics.

We fully welcome additional proposals for both special and general sessions. The deadline for the session proposals is on August 10, 2023.

In addition to the papers that fit with the topic for the five special sessions and nine general sessions currently prepared by the organizing committee, we welcome presentations on diverse topics that are not confined to the topics for the currently proposed sessions.

Abstract Submission Guideline

- Please submit an abstract of 400-1,000 words (up to 2 pages) for each presentation.
- Abstract template is available on the conference webpage (<https://2023kcj.org/ptsubmit/abstractsubmission/>).
- Each abstract has to describe the purpose, methods, and conclusions of the paper.

Conference Themes

All the abstracts related to the below or other related themes of this conference are welcome.

Special Sessions

- Special Session 1: Geography of COVID-19
- Special Session 2: Economic Resilience of Amenity Cluster in a City
- Special Session 3: Planning for the Margin
- Special Session 4: Research on GIScience and Remote Sensing in the Era of Digital Transformation
- Special Session 5: International Collaboration among Young Geographers
- Special Session 6: Climate Change Scenario and Climate Policies at Regional Level
- Special Session 7: Mobilities, Changing Arctic and Reordering of the World
- Special Session 8: Multiple Trajectories of Korean Migration and Overseas Experiences
- Special Session 9: Smart City (Organized by the International Journal of Urban Sciences)
- Special Session 10: Climate Change and Sustainable Societies
- Special Session 11: Sea Level Rise Adaptation Policy
- Special Session 12: Meet the Editors (International Journal of Urban Sciences, Area Development & Policy)

General Sessions

- General Session 1: Applied Cases in GIS and Remote Sensing
- General Session 2: Climatology
- General Session 3: Geomorphology
- General Session 4: Incorporating Time and History to Geographical Research
- General Session 5: Geopolitics and Geoeconomics in East Asia
- General Session 6: Human-Environmental Interactions
- General Session 7: Economic Spaces and Innovation
- General Session 8: New Directions of Cultural Geographies in East Asia
- General Session 9: Urban Geography and Education

Presentations

The abstracts submitted will be eligible for placement either in a poster or lectern session.

Sessions on the Metaverse

There will be a field trip digital photo exhibition on the Metaverse around the conference period. There will be virtual booths promoting Korean local governments and enterprises as well.

Also, poster presentations will be done both on the Metaverse and offline.

Guidelines for Poster Presentation

The poster sessions for the “2023 Korea · China · Japan Joint Conference on Geography” will offer a dynamic blend of offline and online engagement, taking place within a metaverse environment. For the exhibition in the metaverse environment, we request the submission of digital versions of your posters. Prior to creating your posters, please adhere to the following guidelines.

- Stands for presenting posters will be provided by the organizing committee.
- Poster dimensions should be **33.1 inches (width) by 46.8 inches (height) (Ao size, portrait)**.
- Be sure to include your **presentation title**, **author(s)**, and **affiliation(s)**.
- Materials should be of professional quality and legible from a distance of three feet.
- Graphics used in your poster should be of high quality (300 dpi or higher).
- Use bullets, numbering, and headlines to make posters easy to read.
- All online version submissions are due **Saturday, September 30, 2023**.
- Submit it as a **PDF format** file.
- **File name: FAMILY NAME_first name_poster.pdf (ex: KIM_Gildong_poster.pdf)**
- Submissions received after the deadline will not be accepted.
- For the offline presentations, each participant is required to bring their own printed posters (Ao size).

Young Geographer Award

The Young Geographer Award (YGA) will be bestowed to selected young geographers with Certificate of Honor. The YGA honor committee will evaluate both abstracts and on-site presentations in selecting the awardees.

Program

Keynote Speakers



Prof. Sam Ock Park

Professor Emeritus, Dept of Geography,
Seoul National University

Chair Professor, Dept of Economics,
University of Ulsan

Editor, Area Development & Policy (UK)



Prof. Soojin Park

Director, SNUAC

Professor, Department of Geography,
Seoul National University



Prof. Canfei He

Title: Regional Economic Resilience

Professor and Dean, College of Urban and
Environmental Sciences

Deputy Director, Peking University-Lincoln Institute
Center for Urban Development and Land Policy,
Peking University

Vice President of the Geographical Society of China



Prof. Takashi Oguchi

Professor at the Center for Spatial Information
Science, University of Tokyo, Japan

President of the Association of Japanese
Geographers



Prof. Michael Dunford
Emeritus Professor, University of Sussex



Prof. Bo Kyung Yang
Professor Emeritus, Sungshin Women's
University
Former President, Geographical Society of
Korea

Conference Program

Date	Program
Oct. 20 [Friday]	Registration Welcome Reception Business Meetings
Oct. 21 [Saturday]	Opening Ceremony Keynote Speeches Business Meetings Oral/Poster/Special Sessions
Oct. 22 [Sunday]	Keynote Speeches Oral/Poster/Special Sessions Farewell Ceremony
Oct. 23 [Monday]	Fieldtrip (full day) Heart of Seoul: Coexistence of tradition and the modern DMZ

Registration, Payment, and Abstract Submission

Non-students	Students	Note	
200USD 240,000KRW	100USD 120,000KRW	<ul style="list-style-type: none"> The registration fee covers the costs for the conference materials, coffee/tea breaks, Welcome Reception (Friday evening), two lunches (Saturday, Sunday) and the Farewell Dinner (Sunday evening). Accommodation is not included. Field trip is not included. 	<ul style="list-style-type: none"> Online pre-registration is strongly recommended. Presenters should complete registration before submitting the abstract. At least one author must register for the conference.

*Non-students include faculty members, researchers, scholars, government officials, etc.

Payment options

- Homepage: Credit cards
- On-site: We accept only cash (in KRW)

Individual booking of accommodations for offline conference attendees

- There are various accommodation options, including business hotels, co-op residence, and other reasonable options.
- For detailed information on adjacent accommodation, please contact the conference organizer.

Important Dates

May 8, 2023: Registration, payment, and abstract submission web pages open on 2023kcj.org

June 12, 2023: Last date to issue letters of guarantee(归国保证书) and invitation letters to be sent offline by mail

July 15, 2023: Last date for session proposal submission

August 31, 2023: Last date for abstract submission

September 10, 2023: Notification of abstract/paper acceptance (on the conference website / by email)

September 17, 2023: Last date for abstract editing

October 10, 2023: Registration and payment online system closes

September 30, 2023: Last date for poster submission (PDF file)

October 10, 2023: Registration and payment online system closes

Post-Conference Field Trip

A full-day field trip is being planned on October 23, 2023, that enables the conference participants to explore diverse aspects of Seoul and DMZ. Please refer to <https://www.2023kcj.org/confs/info/special/> for more details.

Field Trip 1

Seoul City Tour

Tour price: 150 USD (180,000 KRW)

The tour price includes: Lunch, ticket for N Seoul Tower Observatory admission, transportation (bus), tour guides (Chinese and Japanese)

The tour price does not include: Hanbok (Korean traditional clothing) experience

Booking policy: minimum 15 persons (first-come, first-served, **online payment on the conference website should be completed to be considered full registration**)

Let us know 1) if you have special dietary needs and/or 2) if you are interested in experiencing Hanbok (KRW 10,000 per person, group reservation required)

Registration deadline: September 30

Details of the schedule may vary depending on traffic conditions

Heart of Seoul: Coexistence of tradition and the modern	
08:30	Meet guides and bus at Dongdaemun Area
09:00~10:30	Gwanghawmun Square Hatch Yard Exploring the newly created Gwanghwamun Square in August 2022 (optional: Hanbok experience)
09:50~12:00	Gyeongbokgung Palace Royal Guard Changing Ceremony
12:00~13:00	Lunch
Panorama of Seoul: Namsan and Hangang	
13:00~14:00	Cheonggyecheon, the restored stream: 1-hour walking from Cheonggye Plaza to Soeumgyo Bridge
14:00~16:30	Moving to Namsan by Bus Namsan Mountain with a panoramic view of Seoul With N Seoul Tower Observatory
16:30~17:30	Moving to Sevit Floating Island Enjoy the 360-degree Hangang view of Sevit Maru Rooftop Observatory
17:30~	Return by bus Or Dismissal (if you want to explore the evening of Hangang) Bus will stop by Myeongdong and Dongdaemun for the convenience of participants.

Heart of Seoul: Coexistence of tradition and modern

■ 08:30 Meeting point: DDP

Dongdaemun Design Plaza is a major urban development landmark designed by British Iraqi architect Zaha Hadid (1950~2016). DDP, planned by the Seoul Metropolitan Government in 2006 opened its door on 21st March 2014. Designed as a cultural hub in the historical district of Seoul as well as Korea's largest fashion district, the DDP is composed of undulating surfaces that resemble the flow of liquid and allow flexibility in space.



■ 09:50~12:00 Gyeongbokgung

Gyeongbokgung or Gyeongbok Palace was the main royal place of the Joseon Dynasty (1392~1910). It was in 1395, three years after the Joseon Dynasty was founded by King Taejo (Yi Seong-gye), when the construction of the main royal Palace was completed after the capital of the newly founded dynasty moved from Gaeseong to Seoul. Some 500 buildings were built on a site of over 40 hectares and constituted a small city. An effort to fully restore Gyeongbokgung Palace to its former glory has been ongoing since 1990.



■ 12:00~13:00 Lunch

Samgye-tang (Korean Traditional Ginseng chicken soup) or Seoul-style Bulgogi

■ 13:00~14:00 Cheonggyecheon



Cheonggyecheon is an 11 km-long stream that runs through downtown Seoul. Created as part of an urban renewal project, Cheonggyecheon Stream is a restoration of the stream that was once there during the Joseon Dynasty (1392-1910). The stream was covered with an elevated highway after the Korean War (1950-1953), as part of the country's post-war economic development. Then in 2003, the elevated highway was removed to restore the stream to its present form today.

Panorama of Seoul: Namsan and Hangang

■ 14:00~16:30 N Seoul Tower



The N Seoul Tower is one of the most well-known tourist attractions in Seoul. It was established at the highest point to provide the most beautiful outlook of Seoul. The 236-meter (774 ft)-tall tower was built in 1969 as Korea's first integrated transmission tower beaming television and radio broadcasts across the capital. Since opening to the public in 1980, it has become a much-loved Seoul landmark. The tower's main attractions include multi-colored digital art projected onto the tower at night, a digital observatory, a roof terrace, and restaurants.

■ 16:30~17:00 Sevit Floating Island

Sevit Island is an artificial island and floating structure built by the Seoul Metropolitan Government. It was built to create a cultural landmark along the Hangang. The design was decided through a citizen idea contest in 2006, and construction was completed in 2010. Since then, it has been used as a filming location for various dramas and movies, and has been used as a cafe, restaurant, wedding venue, and exhibition hall, utilizing the fantastic view of the Hangang. It is especially famous for being the location of the Hollywood movie *Avengers: Age of Ultron*.



Field Trip 2

DMZ

Tour Price: 180 USD (220,000 KRW)

The tour price includes: Lunch, transportation, interpretation (English)

The tour price does not include: Hanbok (Korean traditional clothing) experience

Registration: maximum 30 persons (first-come, first-served, **online payment on the conference website should be completed to be considered full registration**)

Registration deadline: September 20

DMZ Peace Tour Course	
10:00~11:30	Peace Observatory, Woljeong-ri Station
Modern Cultural Heritage Course	
11:30~12:00	Headquarters of the Labor Party
12:00~13:00	Lunch
13:00~14:30	Cheorwon Historical and Cultural Park
14:35~15:00	Water Supply Tower
Geosite Course	
15:20~16:00	Jiktang Falls
16:20~17:00	Goseok

DMZ Peace Tour Course

■ 10:00~11:30 Peace Observatory & Woljeong-ri Station

Cheorwon Peace Observatory with three stories and a basement, opened in November 2007.

The first floor is an exhibition hall, and the second floor is an observatory, allowing tourists to observe the ecosystem, fortress of Gung-Ye Castle Town and Seonjeon Town of North Korea in the DMZ.

Woljeong-ri Station was a short resting station for an iron train that traveled from Seoul to Wonsan. It is now the northeast station of the Gyeongwon railroad line close to the boundary line in the Demilitarized Zone. This station is the most famous tourist destination of Cheorwon Security Sightseeing.



Modern Cultural Heritage Course

■ 11:30~15:00 Headquarters of the Labor Party & Cheorwon Historical and Cultural Park & Water Supply Tower



Headquarters of the Labor Party was a building of exploitation, constructed quickly using the forced labor of the locals, in 1946. Each village was extorted 200 sacks of rice under the name of donation. It was also an organization of terror that controlled Cheorwon, Kimhwa, Pyeonggang, Yeoncheon and Pocheon.

Cheorwon Historical and Cultural Park was recreated so that you can see and experience the city of Cheorwon-eup, which was economically prosperous at that time, and in particular, you can take a monorail to Soyisan Mountain at Cheorwon Station. In the 1930s, Cheorwon-gun was one of the three major cities in Gangwon-do with a population of more than 80,000 people, and modern facilities such as Cheorwon-gun Office, Cheorwon Police Station, Cheorwon Theater, Cheorwon Station, School, and Bank were operated in the city of Cheorwon-eup.



In 1937, the **Water Supply Tower** boasted the first waterworks system in Gangwon-do, bringing water to 500 households for a water supply population of 2,500 and a daily water supply of 1,500m³. Currently, most of the facilities on the Waterworks Bureau grounds are gone, and three water towers are all that remain. The towers are concrete cylinders of 3.6m and 3m in diameter and 3.5m in height. The floor is about 1.5m lower than the ground, and the doors and windows face each other. These concrete structures were finished with cement mortar and decorative borders at 62cm in height along the bottom and 15cm and 20cm along the top.



Geosite Course

■ 15:20~17:00 Jiktang Falls & Goseok (Rock)



Jiktang Falls is a waterfall with 3m height and 60m width formed at the lava layer in Hantangang (River) main stream. It shows geological difference between upper part and lower part of waterfall. Lava layer boundary and columnar joint structure can be clearly observed.

Goseok (Rock) is a part of granite body located at Hantangang (River) that runs across lava plateau. The basalt layer and granite layer make a lava plateau and their contact part is formed by dissection. The basalt layer and granite layer, the previous base rock, make asymmetrical topography. Unconformity of two rock layers can be easily observed.



Organizing Committee

Chairperson

Nahm, Keebom (University of Seoul)

Secretary-General

Choi, Suh-hee (Kyung Hee University)

Co-Chair, Scientific Committee

Yang, Byungyun (Dongguk University)

Sohn, Jungyul (Seoul National University)

Co-Chair, Operating Committee

Lee, Jaehyun (Kyungpook National University)

Kim, Jurak (Seoul National University)

Lee, Jae-Cheon (Chinese Academy of Sciences, Kyung Hee University)

Co-Chair, Field Trip Committee

Kim, Chang-hwan (Kangwon National University)

Jeong, Haeyong (Kangwon National University)

Chi, Sang-Hyun (Kyung Hee University)

Oh, Jeong-Sik (Kyungpook National University)

Committee Member

Park, Soo Jin (Seoul National University)

Jin, Jong-heon (Kongju National University)

Lee, Sung-Cheol (Dongguk University)

Chung, Su-Yuel (Sangmyung University)

Lee, Taesoo (Chonnam National University)

Choi, Youngeun (Konkuk University)

Park, Bae-Gyoon (Seoul National University)

Park, Sunyurp (Pusan National University)

Kim, Minho (Sangmyung University)

Lee, Gunhak (Seoul National University)

Cho, Chul-Ki (Kyungpook National University)

Hong, Seong-Chan (Korea National University of Education)

Administrative Manager, Secretariat

Seo, Jungyeon (Inha University)

Kim, Yunsik (Dongguk University)

Son, Youchan (Inha University)

Advisory Committee

Jung, Sung-Hoon (President of KGS, Korea)

Chen, Fahu (President of GSC, China)

Oguchi, Takachi (President of AJG, Japan)

Co-Organizer

The Korean Geographical Society (KGS)
Research Center for Small Businesses Ecosystem, Inha University

Sponsor

The Geographical Society of China (GSC)
The Association of Japanese Geographers (AJG)
Konkuk University Climate Research Institute
Program for Cultivating Innovative Professionals for Sustainable Cities in the Era of Great Transformation, Seoul National University GSES

Contact

The 15th Korea-China-Japan Joint Conference on Geography

Secretary-General

Dr. Choi, Suh-hee (Email: suhhee@khu.ac.kr)

Co-Chair Scientific Committee

Dr. Yang, Byungyun
Department of Geography Education,
Dongguk University, Seoul, Korea

Dr. Sohn, Jungyul
Department of Geography,
Seoul National University, Seoul, Korea

Co-Chair, Operating Committee

Dr. Lee, Jaehyun
Department of Geography,
Kyungpook National University,
Daegu, Korea

Dr. Kim, Jurak
Seoul National University, Seoul, Korea

Dr. Lee, Jae-Cheon
Department of Geography,
Kyung Hee University, Seoul, Korea

Conference website: <https://2023kcj.org>

Email: 2023kcj@gmail.com